

Introduction

Safety Net is a highly acclaimed utility for backing up critical files. It has one default setting and five that are options of your choosing.

The default setting will backup your critical Windows and system files. The program will automatically copy all "GRP" (Registry), "INI", and "INF" files from both your windows and windows\system directories. At the same time the program will copy your "config.sys" and "autoexec.bat" files as well.

Safety Net is an ideal utility for backing up application files. For each user-defined option, you can assign up to 5 different file extensions to copy, and the program is quite capable of finding, zipping, and copying to disk every document, database, and any other type of file on your hard drive.

[Windows Backup Options](#)

[Other Backup Options](#)

[Menu Items](#)

[Visual Overview](#)

[Registration](#)

[CT Software Home Page](#)

Windows Options

Safety Net is set up to automatically find your "windows" directory on its own, so if you simply wish to use the default backup, just hit **START**. If, however, you would like to add some file extension types you must first click on the **OPTIONS** button. This will bring you to the Options dialog screen. This dialog features context-sensitive help, which can be invoked by clicking your mouse on the small help button in the upper right.

File Extensions For Backup

One area of the Options dialog is **File Extensions For Backup**. If you type "PIF", for example, in one of the text boxes, **Safety Net** can then copy your PIF files along with the others. There are a total of five additional choices available.

Create Subdirectories

This option, if selected, will put each file type in a separate subdirectory from the other file types. Whether or not this option is checked, **Safety Net** will look for each file type specified in both the "windows" and "windows\system" directories, and keep them separate. If this box is checked, however, there will then be another level of separation. It will create "WINDOWS\INI", "WINDOWS\GRP", "WINDOWS\SYSTEM\INI", and so on, on the destination disk. If you choose to ZIP the files, the ZIPfile **Safety Net** creates will store the directory information. The directory structure can be restored by choosing **Restore - UnZip Archive** from the menu, and unzipping the file.

Destination Directory

The default is Windows, but you can change it to anything you like. You are free to use nested directories if you prefer, but do not enter any drive information here. The backup drive is chosen in the main dialog. If the files are to simply be copied, the name you choose here will be the directory that the files are copied into. If you choose to ZIP the files, this will be the name of the ZIPfile (if you choose to use a nested directory structure here, the ZIPfile will be named using the final subdirectory name).

Exiting the Options Screen

Clicking on OK will then bring you back to the main screen. Here you can uncheck any of the selected options that you do not wish to copy.

Destination Drive

You can backup to any drive you like. The default is "A", but, if you wish to change that, type in the drive of choice in the box titled "**Backup to drive...**" in the main dialog.

Zip Files

The final option available is whether or not you wish to ZIP the files to your disk. **In order for this option to function you must have a copy of PKZIP on your computer**. The first time you check the **Zip Files** box in the main dialog, you will be prompted for the correct path to your PKZIP.EXE file. If the file is somewhere in your path, you can ignore the prompt and the warning that will follow if you do not enter the correct location, but you are probably best off to go ahead and indicate the proper path. If you choose to **Create Subdirectories**, the ZIPfile **Safety Net** creates will store the directory information. The directory structure can be restored by choosing **Restore - UnZip Archive** from the menu, and unzipping the file.

Other Options

If you have not looked through the "Windows Options" section of this help file, please do so before continuing with this section. Once you have backed up your Windows files you should have a pretty good sense of what to do with your other options.

If you work with a database program, for example, and have several databases that you are constantly adding to or otherwise manipulating, you can set up **Safety Net** to back those database files up to disk. From the main dialog, click on the Option 2 button, and then click on **OPTIONS** to go to the Options screen.

Directory Source For Backup

Use your mouse to select the directory that contains the files you wish to backup. The directory chosen will appear beneath the file dialog area.

File Extensions For Backup

In the "**File Extensions For Backup**" area, type in the extension(s) you wish to backup (such as MDB, for example). You can choose up to 5 file types for each configured option. If you want to backup an entire directory, then leave the text boxes blank and check **All**.

Option Name

The name that you enter here will be the name shown under **Directory** in the main dialog. It has no real function other than as a personal reference. For our example, enter a name such as "Database".

Destination Directory

You **must** enter a name in the Destination Directory. You are free to use nested directories if you prefer, but do not enter any drive information here. The backup drive is chosen in the main dialog. If the files are to simply be copied, the name you choose here will be the directory that the files are copied into. As an example, if you enter DATABASE here, and choose to copy the files to your C: drive, the files will be copied to C:\DATABASE. If you choose to ZIP the files, this will be the name of the ZIPfile (if you choose to use a nested directory structure here, the ZIPfile will be named using the final subdirectory name).

Search Subdirectories

Safety Net is capable of searching subdirectories for your file types. This function can be enabled by checking "**Search Subdirectories**". The program is capable of searching seven directories deep, so if you have any of your file types buried deeper than that, you will have to adjust your directory source accordingly.

Create Subdirectories

Invoking this function will keep the existing directory structure intact, whether the files are zipped or not. This option is, of course, only available if **Search Subdirectories** is also selected. If you have an option set up to create subdirectories, any zip file **Safety Net** creates will store the directory information. The directory structure can be restored by choosing **Restore - UnZip Archive** from the menu, and unzipping the file.

Exiting the Options Screen

Once your options are all set, click on OK to return to the main program screen.

Destination Drive

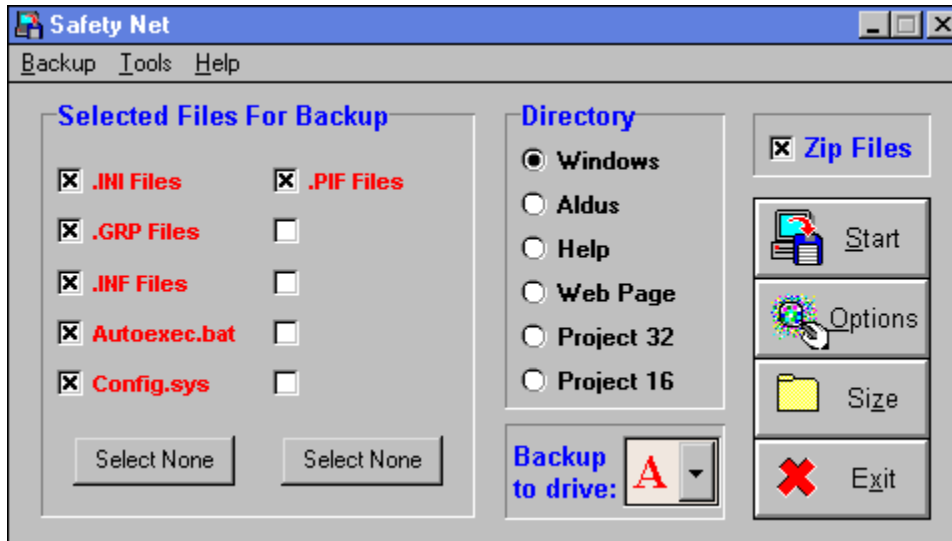
You can backup to any drive you like. The default is "A", but, if you wish to change that, type in the drive of your choice in the box titled "**Backup to drive...**" in the programs main dialog.

Zip Files

If you have a great number of files to copy, you might try invoking the **Zip Files** option. **In order for this option to function you must have a copy of PKZIP on your computer.** The first time you check the **Zip Files** box in the main dialog, you will be prompted for the correct path to your PKZIP.EXE file. If the file is somewhere in your path, you can ignore the prompt and the warning that will follow if you do not enter the correct location, but you are probably best off to go ahead and indicate the proper path. **Safety Net does not support spanned zips** - *if the zipfile created exceeds the available storage area of the destination disk, the backup will fail.* If you choose to **Create Subdirectories**, the ZIPfile Safety Net creates will store the directory information. The directory structure can be restored by choosing **Restore - UnZip Archive** from the menu, and unzipping the file.

Visual Overview

Click on any section of the image below for an explanation of it's function. Be certain to click on the **OPTIONS** button.



If this box is checked **Safety Net** will ZIP the selected files to your backup disk. **In order for this option to function you must have a copy of PKZIP on your computer.** The first time you check the **Zip Files** box in the main dialog, you will be prompted for the correct path to your PKZIP.EXE file. If the file is somewhere in your path, you can ignore the prompt and the warning that will follow if you do not enter the correct location, but you are probably best off to go ahead and indicate the proper path.

Safety Net does not support spanned zips - *if the zipfile created exceeds the available storage area of the destination disk, the backup will fail.* If you choose to **Create Subdirectories**, the ZIPfile Safety Net creates will store the directory information. The directory structure can be restored by choosing **Restore - UnZip Archive** from the menu, and unzipping the file.

[Click here to exit the program.](#)

Clicking on START will initiate the backup. You will be prompted to insert a disk into the selected drive, and the selected files will then be copied.

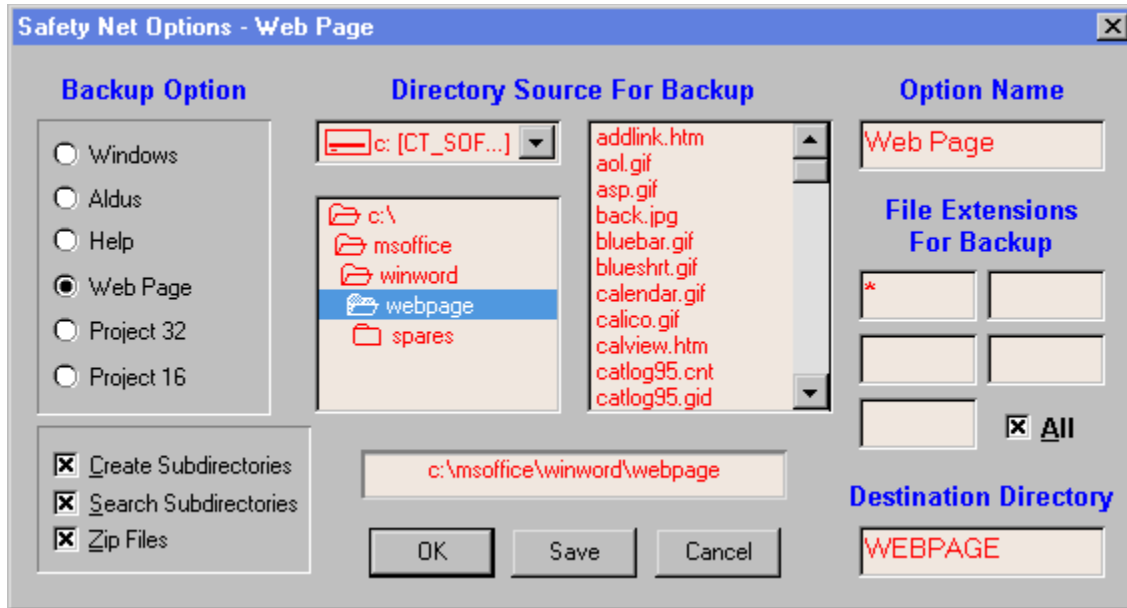
"Windows" is selected when the program starts. If you wish to back up files from a previously configured option, make that selection here.

Choose the backup drive here. The default is drive A, but if you wish to change it, the information will be stored when you exit the program.

All valid entries will be selected for backup automatically. By clicking on the various options, you can de-select each individually or as a group here.

Options Screen

Click on any section of the image below for an explanation of it's function.



For the Windows option, the default destination directory is "Windows". You may change it if you wish. For the other user defined options you **must** type in a name here. You are free to use nested directories if you prefer, but do not enter any drive information here. The backup drive is chosen in the main dialog. If the files are to simply be copied, the name you choose here will be the directory that the files are copied into. If you choose to ZIP the files, this will be the name of the ZIPfile (if you choose to used a nested directory structure here, the ZIPfile will be named using the final subdirectory name).

[Click here to leave the Options screen and return to the main program screen.](#)

Browse to find the desired directory for backup here.

These option buttons correspond to the "Directory" section of the main screen. Whatever name you enter for "Option Name" will appear for both button names.

Enter the particular file extensions for backup here. There are 5 selections available for each option. Whatever you enter here will appear in the "Selected Files For Backup" section in the main dialog.

The name that you enter here will appear under **Directory** in the main dialog as the option name, and will also appear at the top of the Options dialog.

For the "Windows" option, if **Create Subdirectories** is selected, **Safety Net** will put each file type selected for backup in separate subdirectories on your disk. For example, if you are backing up INI and GRP Files, **Safety Net** will create INI and GRP subdirectories in order to keep the file types separate. For the user defined options, Create Subdirectories will simply keep the existing directory structure intact. This option is, of course, only available if **Search Subdirectories** is also selected. If you choose to ZIP the files, the ZIPfile **Safety Net** creates will store the directory information. The directory structure can be restored by choosing **Restore - UnZip Archive** from the menu, and unzipping the file.

If **Search Subdirectories** is checked, **Safety Net** will search nested directories for your selected file types. If **Create Subdirectories** is also checked, the directory structure will remain intact. If the directory structure is **not** to be maintained, **any duplicate filenames will be overwritten.**

Menu Items

Start

Options

Get Size

Create Subdirectories

Search Subdirectories

Make Boot Disk

UnZip Archive

Exit

Invoking this function will bring up a dialog which will return the exact size of the configured backup, and show you a list of the files selected. This information can be helpful in determining whether or not to ZIP the files. You may print out this list if you wish, or you may copy the list to the clipboard so that you can then open a text editor such as Notepad and save the list to a file. You can also print out your directory tree from here. If you choose the root directory before invoking this function, **Safety Net** will print out your complete tree. This hard copy would be invaluable to have in case of a hard drive failure. Do not select **ALL** file types before trying this - if you do, **Safety Net** will try to list every file on your computer, and, trust me, it will take a good long while.

Pressing this button will save the settings for the currently selected option. It is not necessary to use this function if you simply plan to return to the main screen. In that case, the current settings are automatically saved.

Invoking this function will create a boot disk for the computer. You **must** have a floppy disk drive selected first. It is very important to have a boot disk on hand. In case of a hard disk failure, a boot disk is the only way you will be able to access your computer.

Registration

CT Software
759 Galleon Lane - Elk Grove, IL 60007
USA
1-800-617-7740

This program is shareware, and, as such, may be used freely for a period of 30 days. If, after the 30 day evaluation period expires, you find this nifty little utility useful, and plan to continue using it, you are required to register the program.

By supporting the shareware concept you are helping to ensure its continuation, which, I think you'll agree, will benefit us all.

If you wish to register the program, we do accept VISA and MASTER CARD. Our toll-free registration number is **1-800-617-7740**. The cost of registration is **\$15.00**. If you would like a copy of the program on diskette, there is an additional **\$2.00** shipping and handling charge.

If you prefer mail, please send a check in the amount of **\$15.00** to the above address. Be sure to include your name, address, e-mail address, and the exact name of the program, so that we can immediately send you the registration information. If you would like a copy of the program on diskette, there is an additional **\$2.00** shipping and handling charge.

If you are a **CompuServe** subscriber, this program can be registered in the **SWREG** forum. The registration number is **5330**.

CompuServe: 75264,3237
America Online: Ron2222
Internet: Ron2222@aol.com

In Either your "CONFIG.SYS" or "AUTOEXEC.BAT" file there will be a path statement such as:

```
PATH C:\WINDOWS;C:\DOS;C:\;C:\BATFILES;C:\MENU;C:\MOUSE
```

(or)

```
SET PATH = C:\WINDOWS;C:\DOS;C:\C:\BATFILES;C:\MENU;C:\MOUSE
```

The file "PKZIP.EXE" should be in one of the directories specified in this line(s). If it is not you can add the directory holding the file to your path by adding it to the end of the line. It must be preceded by a semicolon to separate it from the previous entry.

On Line Support

Please feel free to visit our Home Page on the World Wide Web, which will permit downloading and access to complete product descriptions of the very latest version of all of the shareware offered by **CT Software**, in addition to offering links to other excellent shareware programs. The URL is

"<http://members.aol.com/ron2222>"

Select the file to be unzipped here. You may either type in the complete path or click on the appropriate file. If you stored the directory structure in the ZIPfile, that structure will be restored.

You can optionally choose a destination directory for the unzipped files here. Do not choose a directory that might contain one or more of the files in the archive, as the original files **will** be overwritten.

Selecting this menu item will invoke a dialog that will allow you to choose a file to unzip. You may either type in the complete path or click on the appropriate file in the dialog. If you stored the directory structure in the ZIPfile, that structure will be restored.

You can optionally choose a destination directory for the unzipped files. Do not choose a directory that might contain one or more of the files in the archive, as the original files **will** be overwritten.

This will bring you to the **Options** dialog, where you can set up all of your various backup options.

If this box is checked **Safety Net** will ZIP the selected files to your backup disk. **In order for this option to function you must have a copy of PKZIP on your computer.** The first time you check the **Zip Files** box in the main dialog, you will be prompted for the correct path to your PKZIP.EXE file. If the file is somewhere in your path, you can ignore the prompt and the warning that will follow if you do not enter the correct location, but you are probably best off to go ahead and indicate the proper path.

Safety Net does not support spanned zips - *if the zipfile created exceeds the available storage area of the destination disk, the backup will fail.* If you choose to **Create Subdirectories**, the ZIPfile Safety Net creates will store the directory information. The directory structure can be restored by choosing **Restore - UnZip Archive** from the menu, and unzipping the file.

This closes the Options dialog without saving any changes.

